



Stoke Gifford Parish Council



Stoke Gifford Parish Council

ANNUAL REPORT

www.stokegifford.org.uk

2023/24

About Your Parish Council

The Parish Council aims to improve the quality of life for the residents of Stoke Gifford.

We will endeavour to encourage and promote the best social and environmental practices for the parish of Stoke Gifford by managing services, assets and the resources of the Parish Council for the benefit of the local community.

Our Pledge to You

- Provide high standard and cost-effective services to help meet the needs and wishes of local residents.
- Engage in open dialogue with residents to understand their needs and together, work out how we will address these needs within the resources and powers available to the Parish Council.
- Actively pursue a representational role.
- Assist, encourage and empower groups and individuals to address local needs.
- Promote the best interest of the Parish for the betterment of the local and greater community.
- Work together with all sections of the community.
- Engage in the protection of the environment within the means of the Council.

We Provide Leisure Facilities & Amenities

We (Stoke Gifford Parish Council) provide a number of adult and youth football pitches, rugby pitches, funding towards the Youth provision service in the parish and a mixed wheel pump track. In addition, we also manage and maintain five recreational areas of open space, a number of play area facilities and a community Café.

All equipment is periodically checked and serviced (where possible) by ROSPA qualified SGPC staff.

We undertake projects to enhance and upgrade existing facilities and to provide new amenities for residents and visitors to enjoy.

We Support Local Organisations

The aim of the Parish Council's Grants Scheme is to promote an active community in Stoke Gifford. The Parish Council recognises and supports the valuable contribution made by the voluntary sector to the well-being of the community.

We provide financial support for the community organisations working for the benefit of Stoke Gifford parishioners, with the intention of improving the range of services and activities in the parish.

We Act for the Benefit of the Local Community

We act for the benefit of the local community and often conduct public consultation exercises to gauge a representative public view of what local people want and how they would like us to act.

The Parish Council is represented on many organisations and management bodies. We work in conjunction with NALC (National Association of Local Councils) on local issues that affect us all and we liaise with South Gloucestershire Council on parish matters, including planning applications.

We Provide a Service

We strive to provide local residents with a cost-efficient service by providing the best value for money. We arrange and/or host annual events including car boot stalls, fun fair shows, Trust Ground Fete, football tournaments and a dog show.

Members and staff of the Parish Council are pleased to assist you.

A large proportion of the Council's time is spent representing, lobbying and campaigning for the needs of our community.

An Annual Report is produced to keep local residents informed of the activities of the Parish Council.

Stoke Gifford Parish Council is constantly looking for ways to improve services in the community. If you spot something that needs attention or something that could be improved, please let us know in the Parish office or SGPC website.

Policies

All of Stoke Gifford Parish Council's policies can be found on the parish website. This includes General policies and Staff policies along with Standing Orders/Code of Conduct, and Financial Regulations.

Local Police Beat Team

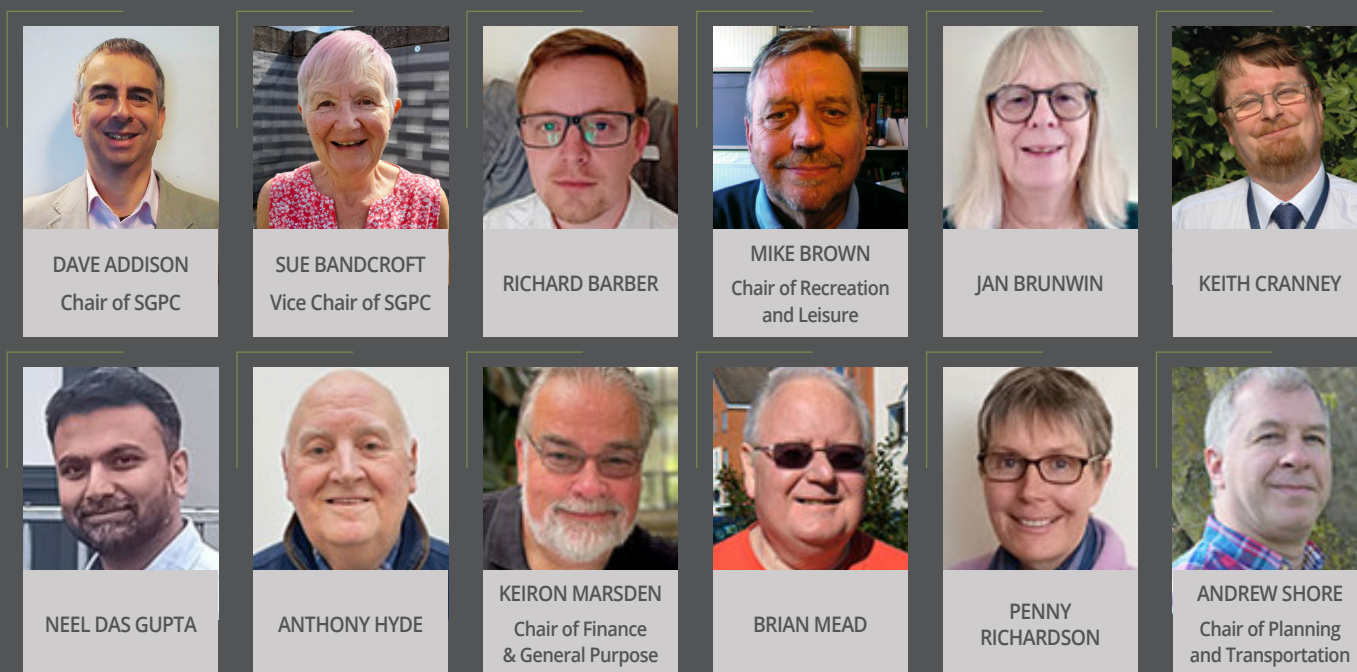
As your local police team we aim to be highly visible in the community, listening to your concerns and addressing root causes of crime. We would encourage the public to be our eyes and ears and report to us their concerns. Please come along to our Police Beat Surgeries and talk to us face to face.

There is currently a "Walk and Talk" initiative that we are very keen to adopt, this can be booked online at Avon & Somerset Police.

PC Elizabeth Ball



Your local Councillors, working for you:



Parish Councillor attendance at Council meetings for 2023/24.

Councillor Name	Total SGPC Meetings 2023/24	Attended	%	Full Council Attendance (8)	Planning Attendance (10)	Finance Attendance (3)	Rec & Leisure Attendance (4)	Number of meetings held so far
Dave Addison	21	19	90	7	9	3	-	21
Sue Bandcroft	25	24	96	8	10	2	4	25
Richard Barber	19	11	58	5	4	2	-	19
Mike Brown	25	21	84	7	8	3	3	25
Jan Brunwin	19	14	74	6	5	3	-	19
Keith Cranney	21	21	100	8	10	3	-	21
Neel Das Gupta	19	17	89	7	8	2	-	19
Anthony Hyde	25	25	100	8	10	3	4	25
Keiron Marsden	22	21	95	7	9	2	3	22
Brian Mead	10	3	30	2	-	1	-	10
Penny Richardson	22	20	91	7	7	3	3	22
Andrew Shore	25	24	96	8	10	2	4	25

* please note newly elected Councillors in May 2023 could not have attended meetings held in April 2023 therefore the attendance figures are based on the meetings Councillors were available to attend

Chairman's Report



CHAIR STOK GIFFORD
PARISH COUNCIL
COUNCILLOR DAVE ADDISON

The first significant event of the year was the election last May. This resulted in a significant change in the Parish Council with long standing councillors retiring and new councillors starting. I'd like to extend personal thanks to all the retiring councillors for their work on the council and particularly Ernie Brown for his work as Parish Council Chair over many years.

The council continues to adapt to the changing boundaries and ongoing development. At the same time as the elections, the parish boundaries were changed and Cheswick Village and Stoke Park became a separate Parish Council. Meanwhile, development East of Harry Stoke continues to add new people to the Parish as the houses are completed and occupants move in. The Council is trying to balance the loss of income from the re-planting of Cheswick Village and Stoke Park with the needs of the new parish residents for community facilities. To this end, the Council is currently looking at the case for running the Community Centre proposed for the Brooklands estate.

Existing facilities continue to be well used with the playing fields and Little Stoke Community Centre all seeing high levels of bookings. Play equipment in the parks also continues to be well used although the destruction of recently replaced Meade Park tower in a fire was a major setback making this popular piece of equipment, and the attached slide, unavailable during the summer months.

After consultation with residents, the tower has been replaced with a simpler set of steps to allow the slide to be used and a zip wire is being installed.

On a more sombre note, this year saw an increase in anti-social behaviour culminating in a stabbing near Little Stoke Park. We earnestly hope that this was an isolated event, but we continue to work closely to support the local Police team to ensure that our green spaces are as safe as possible and usable by everyone.

Overall, the Council continues to maintain the parks and green spaces spread throughout the Parish and tries to do so while providing value for money for residents. We try, and in large part, succeed do this by focussing on what is best for the Parish and by keeping discussions non-political.

In conclusion, I would like to thank both the office and ground staff for all their work over the last year. Their efforts make Stoke Gifford, with its parks and community facilities, the pleasant place to live that it is.

Parish Council Grounds Team Report

We have had to deal with the winter of 2023 into 2024 being confirmed to be the eighth wettest winter on record.

With it being difficult to get many jobs done within the grounds we as a team are lucky to have a Head Groundsman (Colin) who has worked on the parish grounds for over 20 years! His knowledge of the grounds has proved invaluable knowing which areas we were able to tackle given the very wet circumstances.

Many infected Ash and Elm trees in the area have been felled by the team within the last year using our recent qualifications and many more will need to be removed within the coming years.

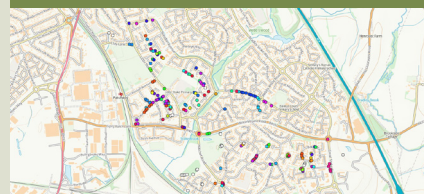
The team has also put in place a temporary fence along Hatchet Road as the hedgerow which was originally filled with small trees had unfortunately needed to be felled.

We have planted over 40 new hawthorn within the hedge to replace any removed trees and also to improve the hedges appearance overall.

The very popular football pitches at Little Stoke have held up very well this winter given the conditions and we're sure it's down to all the pitch preparation carried out towards the end of last summer.

Fingers crossed for a warm dry summer.
COLIN, MARTYN AND ANDY.

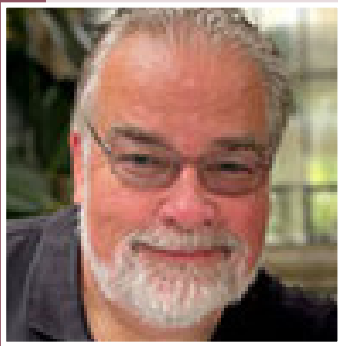
The parish council working with South Gloucestershire are planting many new trees which is great to see.



Plans to install additional trees at Little Stoke park.



Finance Report



**CHAIR OF FINANCE
COUNCILLOR KEIRON MARSDEN**

Last financial year ended with Stoke Gifford having lost around a quarter of its council tax precept income, following the establishment of the new Stoke Park and Cheswick Parish Council. As a result this financial year started with an approved budget forecasting £40k deficit, to be funded from reserves.

While the precept is our main source of income, the Parish Council also receives income from the hire of sporting facilities, hall and room hire, and funding from developers and South Gloucestershire Council via the Community Infrastructure Levy (CIL).

Through careful financial management, at the time of writing we are on track to end the financial year with a reduced deficit.

Our independent in-year financial audit awarded us the highest rating, noting that “systems and processes are excellent, providing good assurance; significant strengths have been identified and are to be commended.”

As well as providing adult and youth sports facilities, parks and green open spaces, play areas and the thriving Little Stoke community hall and cafe, the Parish Council also provides funding towards youth provision, and supports local organisations through the community grants scheme.

During the year we have extended the parking provision at Meade Park at no cost to residents via CIL funding, and replaced the play tower damaged by fire with new steps for the slide, and a zipwire (coming soon) following public consultation - again at no cost to residents.

Councillors agreed to transfer a small proportion of the council’s reserves to the new Stoke Park and Cheswick Parish Council, built up while their residents were paying into the Stoke Gifford precept, as a goodwill payment to aid with the costs of setting up the new council.

Councillors had voted in August 2022 not to take on the running of the planned Brooklands Community Centre, partly in light of the then unquantified risk to council finances posed by the establishment of the new Stoke Park and Cheswick Parish Council.

During summer 2023 councillors decided to reopen discussions on running the Brooklands Community Centre, and see whether we could find ways of reducing the operating deficit projected for the first few years, until it would become self financing. At the time of writing these discussions are continuing, and no decision has been reached.

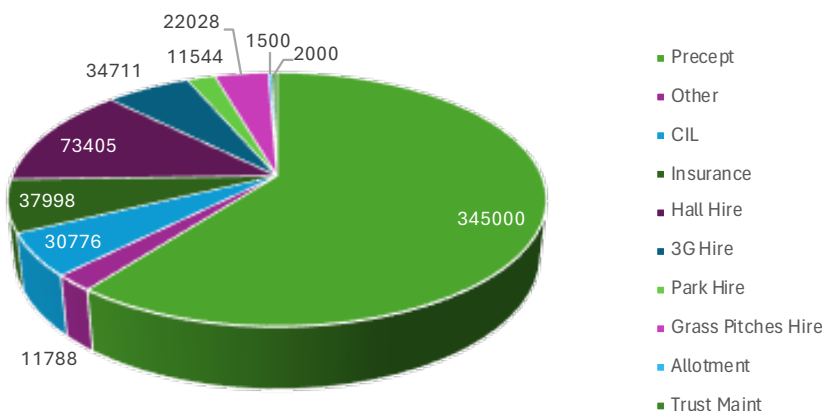
The council still maintains a healthy level of emergency reserve funds, and a five year plan to give visibility of upcoming projects. Budget spend to date is reviewed regularly through the year, and whenever new requirements arise.

In setting the council budget for the next financial year, and despite inflation having run into double figures over the previous year, councillors agreed a below-inflation rise in council tax precept of 4.8% equating to an increased cost per household of 31p per month (Band D) and small increases in the price list for sports pitches, hall and room hire etc.

The budget agreed for the next financial year has a reduced deficit of £14,750 forecast if all budgeted items are fully spent, to be funded from reserves. Councillors believe it is a good, realistic budget which should withstand unforeseen works and hopefully allow us to eliminate the deficit through continued careful financial management.

I firmly believe that the council continues to deliver effective and high-quality services, while giving value for money to our residents. I would like to thank our Clerk, John Rendell, and all our staff for their commitment and ongoing efforts to keep the council running smoothly.

SGPC Income 23/24



Planning & Transportation Report



CHAIR OF PLANNING &
TRANSPORTATION

COUNCILLOR ANDREW SHORE

Your councillors have been working hard to ensure local factors are considered and residents voices are heard on planning applications that affect you. The need for more housing continues, however road capacity, safety, parking provision, amenity space, greenery, and design considerations are important too. The provision of associated infrastructure, to go with additional housing, is a key concern and we press for this, within the constraints of the official planning policies and processes.

On transportation, we continue to engage with South Gloucestershire Council (SGC) StreetCare (and also with local developer Crest Nicholson), pressing for improvements to highway surfaces, the provision of signs and for the refreshing of road markings.

Planning Applications

Your Parish Council, in its role as a statutory consultee, make representations to South Gloucestershire Council (SGC) who then make the final decisions on planning applications. Within the bounds of legitimate planning considerations, your Parish Council push to ensure developments don't adversely impact safety, the environment, community, local residents or the road network. Unfortunately, we are not always able to achieve everything, due to limitations with official planning policies and processes but we do our best.

Over the last year, we have reviewed over 60 planning applications in the Parish. Around 50% of those were for residential extensions, almost 20% were for new dwellings, 15% for commercial / business development, 11% were for advert signs, mobile masts or trees with preservation orders (which also come under the planning application process), with most of the remaining 4% being for additional UWE accommodation (on the ex-B&Q site).

Whilst enabling residents to make changes to their homes wherever possible, our role is to scrutinise applications to ensure they are in-keeping with the area, are well-designed and proportionate and that they don't unreasonably affect the amenity of neighbouring homes.

Many of the proposals thoughtfully consider the environment and context of the surroundings and don't unduly affect other residents. Unfortunately, some proposals are poorly designed, out of keeping with the existing area, result in insufficient private amenity space or would lead to problems for other residents. We have resisted such developments, rationally articulating the valid planning reasons for our objections and, where possible, seeking appropriate changes to make the development acceptable.

Following Parish Council inputs, some of the applications have been turned down by SGC. A greater number were withdrawn or re-submitted with amendments by the applicant, or had conditions added, helping to overcome the original issues.

Solar Panels

It is good that your concerns about the delays and costs involved in submitting a full planning application to install solar panels on the roofs of homes, has been recognised. The Permitted Development Rights have been expanded, by national government, to permit (with a few constraints) the installation of solar panels without the need for a full planning application.

This will hopefully help reduce carbon emissions and trim home utility bills in some cases.

Rolls Royce

It is notable over the last year, that Rolls Royce have submitted four planning applications for their site on Gypsy Patch Lane. We are pleased to have supported these applications and welcome the local employment safeguarding which these developments should help bring.

Community Infrastructure

The news (about a year ago) that the proposed new primary school on the Brooklands Park development has been decided, by SGC, to be no longer necessary or viable (against education department criteria) was unwelcome news to us all, especially when it was an expected part of the new housing development.

Nevertheless, the provision of a nursery and a MUGA (Multi Use Games Area) remain as facilities we anticipate coming forward within the community of Brooklands Park in due course. The potential Community Centre is covered separately in this Annual Review. We are also hopeful that the proposed bus gate will be provided in Brooklands Park and a local convenience store should open after the Crest sales office closes.

For new large-scale housing developments, we would like to see appropriate community infrastructure alongside and within the housing development. This could include, as appropriate to the site, facilities such as a nursery, a school, community & recreational provision, green spaces, GP surgery, dental surgery, a chemist or other local shops. We continue to press both SGC and the developers for these facilities, although the official policies, processes and responsibilities for some of these sits across various government agencies.

Retail Development on Fox Den Road

The development of an Aldi store, a Costa drive-through, a Beefeater restaurant and (for visitors to the area) a Premier Inn hotel, is starting to take shape. The Costa is open, with the remaining facilities expected to open by around June.

Parking Restrictions & Yellow Lines

We are aware of some concerns and issues raised by local residents, regarding the parking restrictions introduced by SGC along Ratcliffe Drive, Sandringham Road and other roads (implemented to help address inappropriate parking), nevertheless there have also been some positive comments too.

This falls under the remit, not of the Parish Council but of our District SGC – within their StreetCare department – but we continue to monitor and to listen to views and comments, especially relevant as learning for the implementation of any future similar restrictions.

We have noted your concerns about how quickly some of the yellow lines have faded, we have raised this with SGC and questioned why it has happened. We look forward to SGC refreshing these lines in the spring, as the weather permits.

Signs & Highways

Following the erection of a Parish noticeboard within the new Brooklands development, the Parish Council are now looking into erecting new Parish boundary signs in relevant locations, following the new developments in the south & east of the Parish and the changes in Parish Boundaries (between Stoke Gifford and Stoke Park & Cheswick last May).

We are aware of your concerns about potholes on our roads. This is the responsibility of SGC StreetCare, who have increasing financial challenges and competing priorities. Whilst we are limited, as a Parish Council, in our influence on this, we do press for the most serious potholes, and those most long awaiting attention, to be addressed.



Brooklands Park

We continue to engage with SGC and directly with Crest, pushing for improvements on street lighting and for the new road & pavement surfaces to be improved. Unfortunately, there are procedures that need to be followed, which take time, before the roads in Brooklands can become adopted by SGC. In the meantime, we continue to press for improvements and whilst we were unsuccessful in our desire for the final stages of the Brooklands development to be constructed from a separate access road, some mitigations have been secured and we continue to engage & press further where appropriate. More streetlights have been energised, some new signs have been recently installed on Oxleigh Way, road markings are being looked into and there is now a timetable for Crest to surface the side-roads and all the pavements in Brooklands Park over the next few months.

Our Monthly Meetings

Parish Planning & Transportation meetings are held on the fourth Tuesday of most months.

Recently, we had a good number of residents attend when we reviewed the planning application for a potential expansion of the existing Medical Practice facility on Braydon Avenue. Representatives of the Medical Practice were there and various views were aired, by both Councillors and local residents, about the benefits such an expansion could bring but also some of the parking concerns and whether alternative sites could be considered. This application is now with South Gloucestershire Council for determination.

Members of the public are welcome to attend all our meetings and, on the fourth Tuesday of the month, can address the committee on planning applications being considered and on other planning or transportation matters. It has been good to have more residents come along to some recent meetings, you are always very welcome to both observe and, at the appropriate time, to share your own views.



Caretaker's Report

Work completed over the last year outside of normal caretaking and maintenance include:

Installation of two new noticeboards for the Parish, one in the Royal Park replacing a dated one. Also, a new one for the new Brooklands Development.

Installed two new Oak Park benches to Mead Park which takes them up to three.

Started the Zip Wire project but unfortunately the weather has prevented the ground works from being completed. This will be done at the right time when the sun comes out to play.

Graffiti is an ongoing problem, but we are staying on top of it.

We have installed a new Blood box to help our local residents in the event of a major bleed whilst in the Little Stoke Park area.

We have replaced the large blinds in the meeting room.

Ongoing painting internally keeps the building looking fresh, it's never ending due to usage but 99% of the time it looks nice, and we get feedback from our users that they like the building. This shows with the increased bookings income this last year.

I have some new projects to work on going forward, to install some nice stones in front of the office and then to put some planters in to give it some colour and make the appearance when visiting the site a cheerier one.

Continue painting internally.

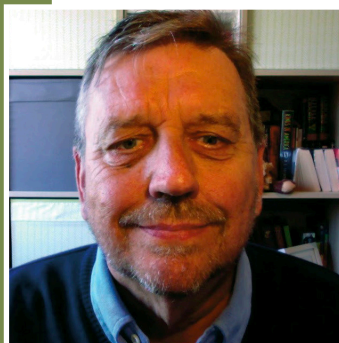
Painting some of the dated play area equipment.

Keeping the bus shelters looking tidy by replacing broken frames.

It has been a very damp winter which has been frustrating, but I am looking forward to lighter afternoons and early evenings which will help with continuing with plans to make the sites and parish look as good as we can.

PAUL PASSAWAY
Caretaker

Recreation & Leisure Report



CHAIR OF RECREATION & LEISURE COUNCILLOR MIKE BROWN

Its now been over 2 years since our ground staff have been back to full strength and the covid restrictions ended, which allowed our team to catch up with some of the minor issues that were put on the back burner, all of our ground staff equipment is well maintained & in good running order. The 3G pitch has recently had a few minor repairs done & although it has now passed its expected life and after inspection by the experts Slatter Company & will probably last at least another 3 years due to being well maintained, a credit to the team.

The recent weather conditions we have seen this last year have made it very challenging for Colin and his team. But they have managed to maintain all of our parks, play areas, recreation and open spaces in excellent condition, children's play areas have been refurbished or replaced with new, they are also tackling the ash dieback tree problems that need to be addressed. Also, our football pitches have been maintained to a playable standard when other sports fields in surrounding areas have had to cancel many games.

Our 2 vehicles that were burnt out have been replaced, we have also replaced our ageing grass cutting equipment.

The additional children's play area at New Road has been open for over a year and has proved to be very popular. The BMX continues to be extremely well used and is very popular with all ages from toddlers to adults. People travel from outside the parish to visit the track.



Meade Park has now had the popular slide reinstated, with a new zip wire to follow. Unfortunately due to bad weather work had to be halted but the zip wire will be completed as soon as the ground has had time to dry out.

The car park has been improved and an additional 6 parking spaces added, CCTV has now been added in the park & improvements made to footpaths that were needed.

We continue to receive many compliments from our residents and visitors about how well kept our parks, open spaces and facilities are and it has been great to see so many people enjoying all of our parks and recreation areas, a reflection of how fortunate we are as a parish to have such great parks and facilities.

We have to thank all of our Parish staff for all their hard work and efforts.

We do still suffer from litter in the parish, although our groundsmen do keep the parks litter free as best they can, and it is a very time consuming task for them. We have over the past year resurrected the litter pickers group which meets approximately every 4 weeks and are always looking for additional volunteers to cover all areas of the Parish, litter picking equipment is available from the parish office for anyone who would like to litter pick at any time.



Deja Brew

Sadly the popular mobile coffee unit based at Meade Park has stopped operating. Personal circumstances have changed and the owner (Claire) has stopped running the business. Meade Park is such a lovely recreational space and enjoyed by many residents. The Café was extremely well received and we hope to be able to find a similar operation in the near future.



Local Nature Plan



VICE CHAIR OF SGPC
SUE BANDCROFT

Stoke Gifford Parish Council in partnership with South Gloucestershire Council has recognised the importance of taking steps to address the ecological crisis our world is facing. Acting together we will:

1. Address the effects of climate change.
2. Enhance the ecological value of our parks and green spaces.
3. Develop local habitat so plants, ferns, lichen, trees, insects and birds thrive.
4. Create and connect wildlife corridors.
5. Make nature relevant to all local residents.

We need everyone to become involved:

- To improve how we manage and connect public open spaces.
- To provide vital green space for nature to thrive in our communities.
- To create more attractive and healthier places for residents to live, now and in the future.

A Local Nature Action Plan has been drawn up in order for us to take the necessary steps to stop the decline of biodiversity. This is a five year plan.

Target for 2023/24

- Build 10 Kent Bat Boxes and erect in the local area
- Build 10 Hedgehog Boxes and locate
- Build 10 Bird Nesting Boxes and erect in local area

Sourcing Wood Supplies

SGPC are working alongside South Glos tree department to source large tree trunks to supply the wood needed for the boxes (free of charge). The trees will be sourced from local park areas (from fallen / diseased trees).

South Glos have kindly agreed to help the SGPC Local Nature plan by also supplying wood from local tree works / felling.

Get Involved by Volunteering

Volunteers are needed to help with the building of:

- Bat Boxes
- Hedgehog Boxes
- Bird Nesting Boxes
- Tree Planting

We also need volunteers to help plot sighting of hedgehogs and bats on the national database.

Building New Boxes

Volunteers from Little Stoke Social club are busily designing and building new homes for the bats, birds and hedgehogs.

Tim Hewer (pictured below) is coordinating the production etc. If you are interested in joining the working team, please contact the local Parish office and we can pass on your information.

Building Bat Boxes

Can you help with building bat boxes?

If so, please download the Bat Box Information Pack (PDF) on the parish council website which contains instructions on how to make a Kent Bat Box, and also explains the best location to site the Bat Box.



Local Nature Plan – Contact Details

CLlr Sue Bandcroft has been working hard in compiling this local plan and will be actively involved in completing the agreed targets for 2023/24.

If you are able to offer further support or help with this plan, please contact CLlr Sue Bandcroft. Any help you can offer would be greatly appreciated and would also help build and support local natural wildlife.

River Restoration - Autumn 2023

What's going on in the 40 Acres river? A team of specialists from the Bristol Avon River Trust (BART) are installing improvements in the Stoke Brook.

Along with a team of volunteers they are pinning small brushwood bundles, known as berms, into the river. These add small bends into the river which was straightened and 'tidied up' by humans back in the past before we maybe understood the implications of a tidy river for water flow and wildlife.

In high flow the water rushes through and all plant life, insects and fish eggs get washed away. The berms will allow wildlife to flourish again and add nooks and crannies for fish and the water insects they feed on to hide away and thrive. The berms will also catch soil, gravel and small particles that wash in from roads, drains, rooves etc. which can smother a river. The berms in the brook further upstream in Bradley Stoke have been very successful.

Residents can get involved by volunteering for BART.

We can all play our part by ensuring we never put anything down the toilet other than paper, poo and pee. We must also never put anything down the drain. Old paint, oil, white spirits etc can all be taken to the nearest recycling centre.

Homeowners can reduce the amount of rainwater entering the drains by installing water butts, avoiding tarmac driveways and gardens.

Parish Clerk Overview

This Parish Council continues to offer an invaluable service to its local residents including support to local clubs, groups and organisations through Grant Aid.



PARISH CLERK JOHN RENDELL

As we closed quarter 4 of the 2023/24 financial year the parish council finances are stable and again shows we have monitored our outgoings and income closely throughout the year, and overall I am pleased to report we are in a healthy position. For any organisation or business to deal with a loss of circa £120k (due to the loss of Cheswick Village & Stoke Park) can potentially be catastrophic so the figures showing on the annual budget are really quite something. All credit to everyone involved from the Finance Officer/ Admin staff and Council members at the various meetings held throughout the year.

It's very sad and worrying to see many councils across the country in financial ruin.

We have very dedicated and skilled grounds staff and early in 2023 Andy and Martyn gained their small tree felling licence & chainsaw qualification and this has really impacted on the Tree Maintenance budget positively. We have always used the maximum or majority of the £10k budget in previous years and this ended at £4.4k so this shows we can now work more efficiently and effectively by covering more work in-house.

We must remember the Ash Dieback Crisis. Ash trees near to highways, car parks or properties across the parish and recreational spaces are being surveyed to monitor the spread and effect of the disease. Those trees identified as being severely affected will need tree surgery and possibly felling in the autumn for safety, so we need to bear this in mind for future budget setting.

The Caretaker continues to carry out many jobs required at the Community Hall throughout the year, the budgets show that with more work being undertaken in-house it means we can continue the upkeep of the building but through the cost of materials only (without external contractors/ labour where necessary).

We have invested some time and money into the changing room building this past year and this shows within the 'Satellite Building' maintenance budget. It's an old building but heavily used so we have tidied up the toilets/ showers and hallway throughout the year. We plan to continue the improvements into the 2024/25 year. The Grounds staff and Caretaker are hoping to repair/ paint the flooring which is in much need of sorting. As long as we can do this in-house it will be extremely affordable at cost of materials and an excellent much needed update. The changing rooms are heavily used week in week out by the resident football clubs by all ages.

The council officers Cath and Rachel have worked tirelessly this year on the bookings side of the business, working hard on finding availability where possible in all rooms and then the aftercare for the hirers ensuring the service provided is an excellent one. The rooms are currently close to full capacity.

This really shows within the budget as we closed quarter 4. The 2022/23 income was the highest on record at £58,817 (predicted £26,615) and this last year we have exceeded that again by taking £73,405. This reiterates that the building extension at the Little Stoke Community Hall in 2019 was a success, although this council had various issues with the project plan and standard of build at the time, we are now benefiting from the work gone into the building over the past few years. Our Cleaner (Ira) quietly goes about her business keeping the site spotless every day as she continues to prove what an important cog in the council wheel she is, ensuring the Community Hall is in A1 condition before she leaves at 6am each working day!

The Parish Council owned general waste bins/ benches and bus shelters are in reasonably good condition. They are regularly monitored and serviced by staff, and we continue to update and replace where necessary. The old style SGPC bus shelters look a little tired, but they are regularly cleaned and perspex replaced when damaged (by the caretaker) so they are in full practical condition across the parish. As and when we may need to replace a shelter I will take it to the next available council meeting for discussion. A bus shelter costs in the region of £5k - £7k. The 2023/24 'Street Furniture' budget was set at £2k and we closed at approx. £1k.

The Community Café on site continues to flourish, and we have found a steady increase in the local football coming back to operation following the demise of so many football teams at grass roots level throughout the COVID period.

We look forward to the better weather ahead where we can continue to improve on the recreational spaces we operate within the parish, allowing the thousands of local residents to enjoy the fantastic facilities on your doorstep.



Foodies Festival

During 2023/24 we were proud to host the Foodies Festival at Little Stoke playing fields. It was a fantastic event and well supported by many local residents turning out in high numbers across the three days.

Unfortunately the Events team have moved the event to Bath (Victoria Park) for 2024 but we hope they will return to Stoke Gifford in the near future.

About Local Councils

A local council is a universal term for community, neighbourhood, parish and town councils. They are the first tier of local government and are statutory bodies. They serve electorates and are independently elected and raise their own precept (a form of council tax). There are 10,000 local councils in England with over 30% of the country parished and 100,000 councillors who serve in these local councils, with over £1bn being invested into these communities every year.

Local councils work towards improving community well-being and providing better services. Their activities fall into three main categories: representing the local community; delivering services to meet local needs; striving to improve quality of life and community well-being.

Through an extensive range of discretionary powers local councils provide and maintain a variety of important and visible local services including allotments, bridleways, burial grounds, bus shelters, car parks, commons and open spaces, community transport schemes, community safety and crime reduction measures, events and festivals, footpaths, leisure and sports facilities, litter bins, public toilets, planning, street cleaning and lighting, tourism activities, traffic calming measures, village greens and youth projects.

Grants to Local Community Groups

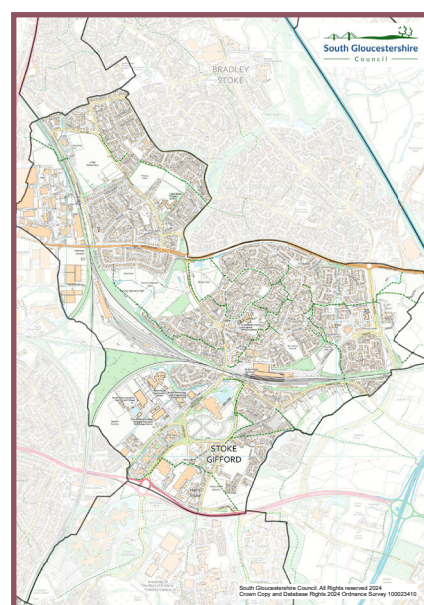
Stoke Gifford Parish Council promotes an active community in Stoke Gifford by awarding grants annually to non-profit making organisations. These organisations work for the benefit of Stoke Gifford parishioners, with the intention of improving the range of services and activities in the parish. Applications are particularly welcome from community groups and activities that respond to the climate and ecological crisis.

The Parish Council recognises and supports the valuable contribution made by the voluntary sector to the wellbeing of the community. Many groups have benefited from grant assistance in the past.

Warm regards,

John Rendell

Parish Clerk



Grants Awarded 2023/24

Date	Ref	Company	Sum	Meeting Approval
11/4/23	6581	Little Stoke Social Club	£500	11/4/23 Full Council Item 8
11/4/23	6580	Heart Heroes	£888	11/4/23 Full Council Item 7.1
11/4/23	6579	SG Trust Short Mat Bowls Club	£1,000	11/4/23 Full Council Item 7.2
10/5/23	6629	St Michael's PCC – Messy Church	£500	10/5/23 Full Council Item 7.2
13/6/23	6681	Citizens Advice South Glos	£8,080	13/6/23 Full Council Item 6
13/6/23	6680	Summer Play Scheme	£5,000	13/6/23 Full Council Item 6
9/2/24	7060	Great Western Air Ambulance Charity	£2,000	9/1/24 Full Council Item 5.1

STOKE GIFFORD PARISH COUNCIL MEETING DATES 2024

SERVICES & FACILITIES

MEETINGS WILL BE HELD ON A TUESDAY

All meetings to take place at 19:00 unless stated but may be subject to change*.

Venue: Little Stoke Community Hall (BS34 6HR)

FULL COUNCIL

(Second Tuesday of Month)

(Annual Meeting) Tuesday 14th May 2024

Tuesday 11th June 2024

Tuesday 10th September 2024

Tuesday 8th October 2024

Tuesday 12th November 2024

FINANCE AND GENERAL PURPOSE

(Second Tuesday of Month)

Tuesday 9th July 2024

Tuesday 10th December 2024

PLANNING AND TRANSPORTATION COMMITTEE

(Fourth Tuesday of Month)

Tuesday 28th May 2024

Tuesday 25th June 2024

Tuesday 23rd July 2024

Tuesday 24th September 2024

Tuesday 22nd October 2024

Tuesday 26th November 2024

RECREATION AND LEISURE COMMITTEE

(Third Tuesday of Month)

Tuesday 16th July 2024 (14:00)

Tuesday 15th October 2024 (14:00)

**Please refer to the noticeboards and Parish Council Website.*

Little Stoke Community Hall

www.stokegifford.org.uk/services

Little Stoke Community Café

Tel: 07751 194510

Outdoor Sports

www.stokegifford.org.uk/services

REPORTING

Report Fly Tipping

All fly tipping should be reported to South Gloucestershire Council so they can take action to remove it.

Report Pot Holes

All pot holes and damaged road surfaces should be reported to South Gloucestershire Council so they can take action to repair them.

Report Overgrown Footpaths & Walkways

Overgrown footpaths and walkways can be reported to South Gloucestershire Council so they can take remedial action.

www.southglos.gov.uk/general-information/online-services/report/

Report Graffiti

Stoke Gifford Parish Council are keen to keep on top of the ever increasing graffiti problem around the Parish.

Officers can report graffiti to South Glos Council whether on private or public land and as long as the property owner/ landlord will sign a waiver form the Parish Council can arrange for the clearance for an agreed fee between Councils.

Please report to Stoke Gifford Parish Council Officers for graffiti in the Parish.

Phone: 01454 865202

Email: admin@stokegifford.org.uk

South Gloucestershire Council

Phone Streetcare: 01454 868000

Email: streetcare@southglos.gov.uk

Note from South Gloucestershire Streetcare Department

Our graffiti team price up each job individually so they can check that the graffiti removal is likely to be successful, assess if any damage may occur to the surface during graffiti removal and ensure they have access for their equipment. As a guide, for an averaged size tag on a residential property (e.g a rear garden wall) the charge would be £30.

COUNCIL MEMBERS AND STAFF

Council Members

Dave Addison

Chair of SGPC

Sue Bandcroft

Vice Chair of SGPC

Richard Barber

Mike Brown
Chair of Recreation and Leisure

Jan Brunwin

Keith Cranney

Neel Das Gupta

Anthony Hyde

Keiron Marsden

Chair of Finance and General Purpose

Brian Mead

Penny Richardson

Andrew Shore

Chair of Planning and Transportation

Council Staff

John Rendell

Parish Clerk & Responsible Financial Officer

Rachel Madden

Administration & Marketing

Catherine Slade

Finance & Administration

Paul Passaway

Building Maintenance & Cleansing Operative

Ira Davey

Cleaning Staff

Colin Kenyon

Head Groundsperson

Andy Slade

Groundsperson

Martyn Rendell

Deputy Head Groundsperson

FURTHER INFORMATION

Western Power Distribution

Responsible for electricity sub stations and junction boxes, will remove graffiti on their equipment on request from members of the public.

Phone: 08456012989 weekdays 8am-6pm

Email: info@westernpower.co.uk

BT/Openreach

Responsible for telephone boxes and green junction boxes, will remove graffiti on their equipment on request from members of the public

Telephone boxes (BT):

Phone: 0800 661610

Email: customer.serv.payphones@bt.com

Green cabinets (Openreach):

Phone: 0800 023 2023 Option 1: Damaged green cabinets and/or open doors on them.

Royal Mail

Responsible for Post Boxes, will remove graffiti on their equipment on request from members of the public.

Phone Customer service: 08457740740

Email: contactus@royalmail.com

Virgin Media Street Cabinets

Responsible for roadside street cabinets, will remove graffiti on their equipment on request from members of the public.

Virgin Media Graffiti Removal:

0330 333 0444

Stoke Gifford Parish Council, The Community Hall, Little Stoke Lane, Little Stoke, BS34 6HR

Tel: 01454 865202 | Email: admin@stokegifford.org.uk