

Contract No	242-S009923	Client: British Telecom
Date	21/07/2021	Site Address
Drawn by	GH/242	Filton Lane,
Approved By	MT/242	Bristol,
Purpose of Works	Structure Access	South Gloucestershire
Amend No	000-000000	BS34 8RR
Amendment Date	NOT TO SCALE	
Scale	1 of 1	450m OL 40/50mph
Sheet No	1 of 1	OS Licence No 000000000000

DETAIL A Proposed road sign placement. Refer to the relevant traffic signs and signs manual for details. The signs should be placed in accordance with the relevant traffic signs and signs manual. The signs should be placed in accordance with the relevant traffic signs and signs manual. The signs should be placed in accordance with the relevant traffic signs and signs manual.

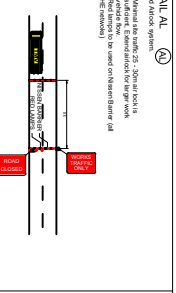
DETAIL B Proposed road sign placement. Refer to the relevant traffic signs and signs manual for details. The signs should be placed in accordance with the relevant traffic signs and signs manual. The signs should be placed in accordance with the relevant traffic signs and signs manual. The signs should be placed in accordance with the relevant traffic signs and signs manual.

DETAIL C1 Proposed road sign placement. Refer to the relevant traffic signs and signs manual for details. The signs should be placed in accordance with the relevant traffic signs and signs manual. The signs should be placed in accordance with the relevant traffic signs and signs manual. The signs should be placed in accordance with the relevant traffic signs and signs manual.

DETAIL C2 Proposed road sign placement. Refer to the relevant traffic signs and signs manual for details. The signs should be placed in accordance with the relevant traffic signs and signs manual. The signs should be placed in accordance with the relevant traffic signs and signs manual. The signs should be placed in accordance with the relevant traffic signs and signs manual.

DETAIL D Proposed road sign placement. Refer to the relevant traffic signs and signs manual for details. The signs should be placed in accordance with the relevant traffic signs and signs manual. The signs should be placed in accordance with the relevant traffic signs and signs manual. The signs should be placed in accordance with the relevant traffic signs and signs manual.

DETAIL AL Proposed road sign placement. Refer to the relevant traffic signs and signs manual for details. The signs should be placed in accordance with the relevant traffic signs and signs manual. The signs should be placed in accordance with the relevant traffic signs and signs manual. The signs should be placed in accordance with the relevant traffic signs and signs manual.



SUNBELT RENTALS
 Sunbelt Rentals UK (Traffic Management)
 Kemble CL7 8BD
 Telephone: 01753 502 0792

